



S A T U R N  
V



# — SATURN V —

---

**SO YOU THINK YOU KNOW SATURN? THINK AGAIN.**

Saturn is a drum that won't rest on its laurels. Its look, its tone, and its robust construction have made it the only touring & recording choice for a community of professional drummers around the globe. With the addition of the SONIClear™ Bearing Edge and the SONIClear™ Tom Holder, Saturn V has been enhanced to offer easier tuning and a fuller, rounder tone with a deeper, darker pitch.

**FEATURES & CONFIGURATIONS.....3**

**EXOTIC EDITION ..... 11**

**TOUR EDITION ..... 21**

**SATURN ARTISTS..... 32**





WILL CALHOUN  
LIVING COLOUR

## — FEATURES & CONFIGURATIONS —

SATURN V ARRIVES WITH NEW FEATURES THAT'LL ENHANCE AN ALREADY KILLER SOUND. DO YOU LIKE FAT AND DENSE FLOOR TOMS? HOW ABOUT CLEAR AND FOCUSED RACK TOMS? ANYBODY FOR BASS DRUMS THAT KICK YOU IN THE CHEST?

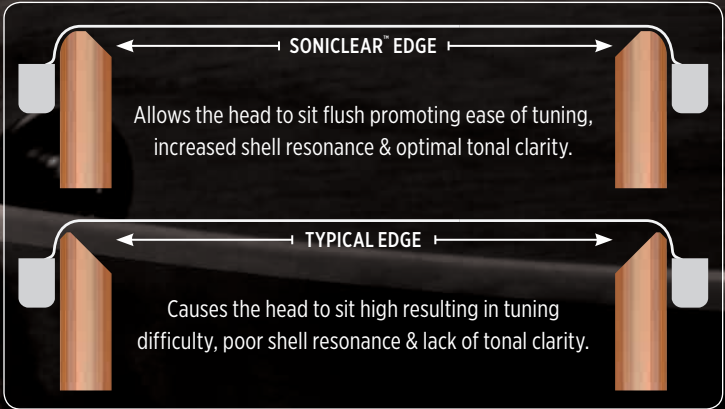
WE'LL COME ON IN! WE'VE GOT SOMETHING TO SHOW YOU...





# SONICLEAR™ BEARING EDGE

The **SONIClear™ Bearing Edge** is standard on all Saturn V shells and allows the drumhead to sit flatter and make better contact with the shell. The result is a stronger and deeper fundamental pitch, effortless and consistent tuning, and a significantly expanded tuning range. For the serious player, the increased head to edge contact increases shell vibration, allowing the sonic nuances of the Hybrid shell to stand out.



Allows the head to sit flush promoting ease of tuning, increased shell resonance & optimal tonal clarity.

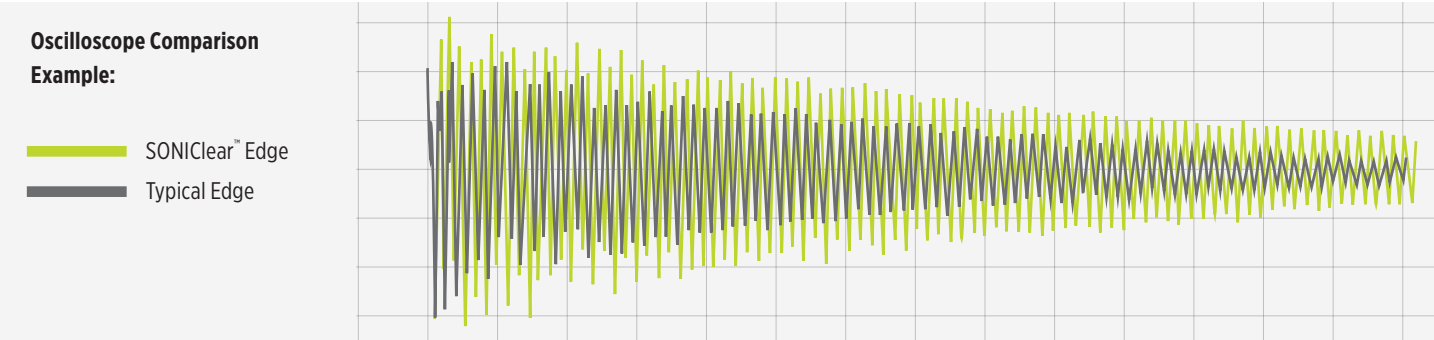
Causes the head to sit high resulting in tuning difficulty, poor shell resonance & lack of tonal clarity.

## SONICLEAR™ EDGE AUDIO TEST SESSIONS

### SOUND

The increased drumhead-to-shell contact achieved by the SONIClear™ Edge enhances shell vibration, resulting in the biggest sound possible from the drum.

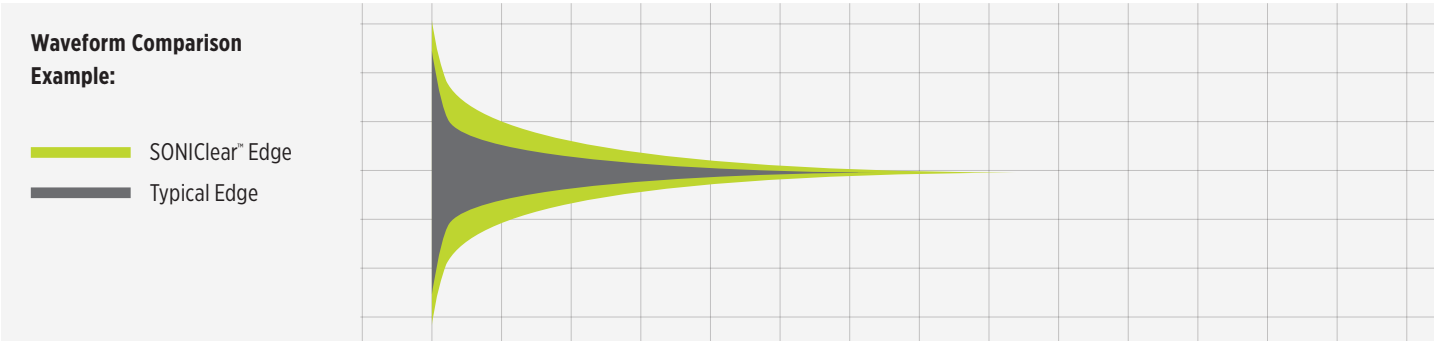
**Oscilloscope Example:** The Green Waveform is a recording of a drum with the SONIClear™ Edge. The dark grey waveform is a drum with a typical edge. Tuned to the same pitch and recorded identically, it's clear that the drum with the SONIClear™ Edge produces a much larger waveform from the initial strike through the full sustain of the note.



### SUSTAIN

Because the drumhead sits flat on the SONIClear™ Edge, the tension applied during tuning is more balanced and stress-free. This allows the drumhead to vibrate freely and fully.

**Waveform Comparison Example:** The Green Waveform is a recording of a drum with the SONIClear™ Edge. The dark grey waveform is a drum with a typical edge. The size of the SONIClear™ waveform indicates a lower and stronger fundamental pitch while the length indicates a longer sustain compared to a typical edge.

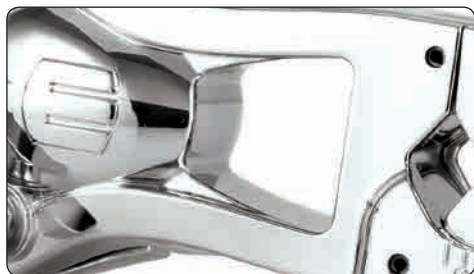




# SONICLEAR TOM HOLDER

(patent pending)

The **SONIClear™ Tom Holder** is the standard attachment mechanism for all Saturn V rack toms. The low-mass bridge preserves vibration in the head and shell, enhancing resonance and increasing tonal clarity.



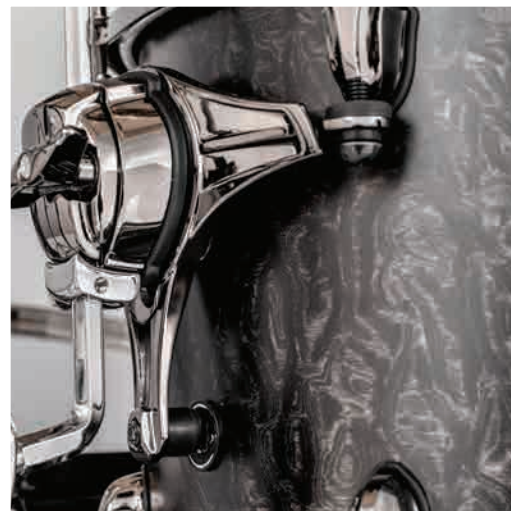
The low-mass bridge preserves vibration in the head and shell, enhancing resonance and increasing tonal clarity.



An Omni-ball arm adjustment allows toms to be positioned at any angle and inverted for convenient bottom head tuning.



The spring-hinged adjustable clamp with position markings accommodates tube diameters from 5/8" to 1 1/4" and makes setup easy and consistent.



## SONICLEAR™ TOM SUSPENSION

Hate it when you see more of the mount than you do of the shell? Us too.

Increases overall resonance by preserving vibration in the shell and heads.

Doesn't touch the tension rods, helping heads stay in tune and making them easy to change.



## LOW-CONTACT CLAWS

Tired of your bass drum claws looking like everyone else's? Try these.

Increase resonance by reducing weight and contact on the counterhoop.

Rubber gaskets protect the hoop finish and prevent the claw from rattling during play.



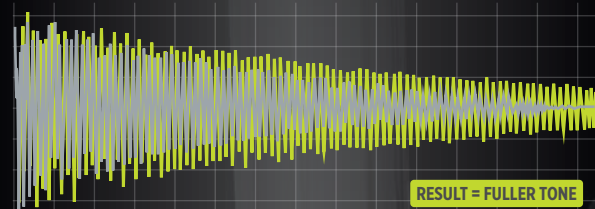
## MEMORY-MARK BASS DRUM SPURS

Ever use a ruler to make them even? Then this is for you.

Markings on the spur rods help players recall their settings and ensure level set-up.

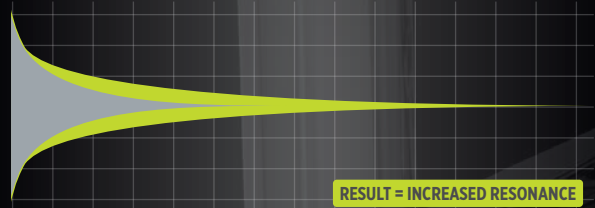
Circular treads on a rounded rubber foot prevent the drum from sliding during play.

### Oscilloscope Comparison Example



RESULT = FULLER TONE

### Waveform Comparison Example



RESULT = INCREASED RESONANCE

SONIClear™ Tom Clamp    Typical Tom Clamp



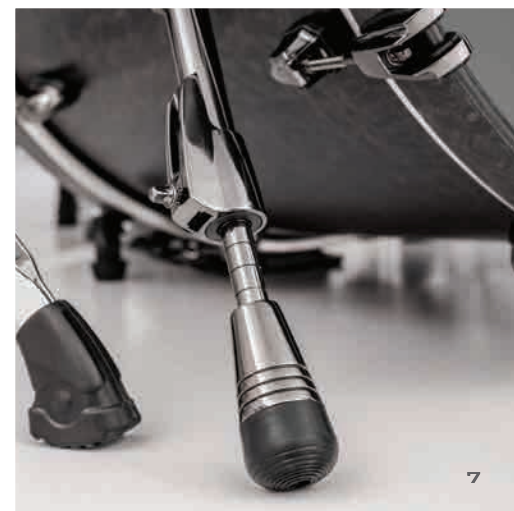
## FREE-FLOATING BASS DRUM MOUNT\*

The sound of a virgin bass drum or the convenience of a mount. Why not both?

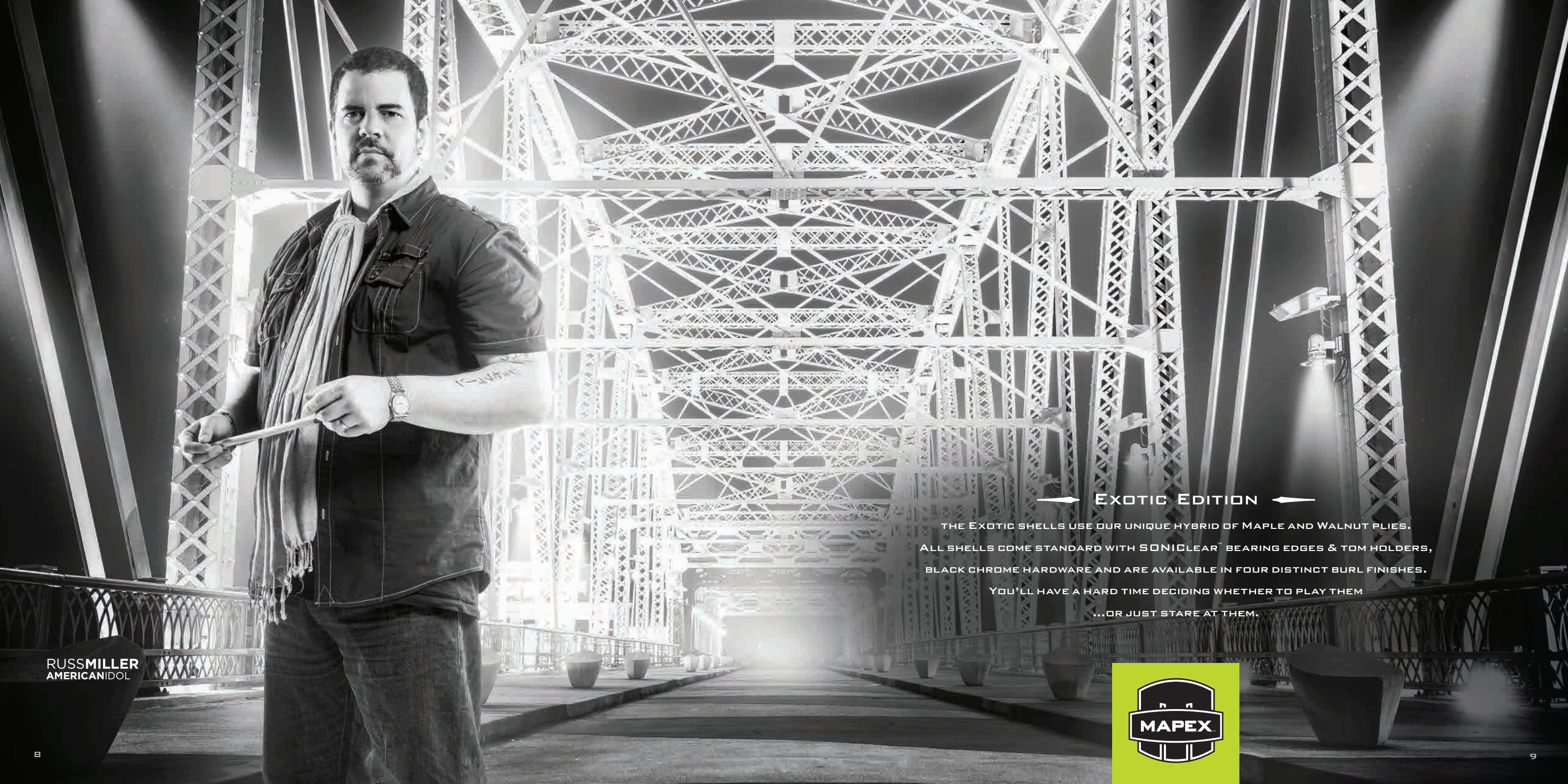
Mount floats on suspended rails to maintain a virgin shell sound.

Sliding mount bracket helps players find their ideal rack tom distance.

\*Sold Separately.







RUSMILLER  
AMERICANIDOL

— EXOTIC EDITION —

THE EXOTIC SHELLS USE OUR UNIQUE HYBRID OF MAPLE AND WALNUT PLIES.  
ALL SHELLS COME STANDARD WITH SONICLEAR™ BEARING EDGES & TOM HOLDERS,  
BLACK CHROME HARDWARE AND ARE AVAILABLE IN FOUR DISTINCT BURL FINISHES.  
YOU'LL HAVE A HARD TIME DECIDING WHETHER TO PLAY THEM  
...OR JUST STARE AT THEM.





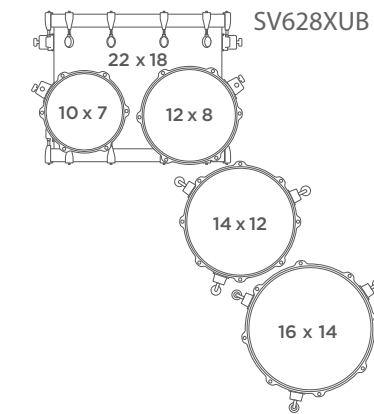
# CONFIGURATIONS

## How many ↑ and how many ↓?

The Saturn V Series offers a variety of configurations designed to fit diverse musical applications. Whether the preference is fast and focused or big and booming, every drummer can find a setup to suit their style.

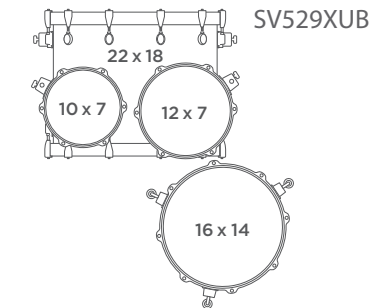
### 5pc Studioease Shell Pack [2↑ - 2↓]

Whether in the studio or on the stage, this 2 up and 2 down shell pack has a big and rounded sound with great versatility. With fast sized tom depths, these drums speak quickly and cut through the mix.



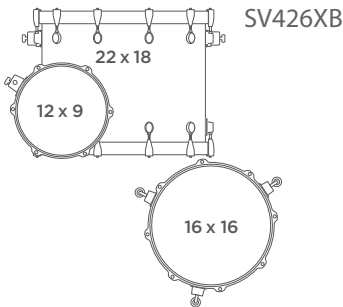
### 4pc Rock Shell Pack [2↑ - 1↓]

This 2 up and 1 down configuration keeps all the toms within easy reach, yet still delivers a highly versatile sound that's a match for any style.



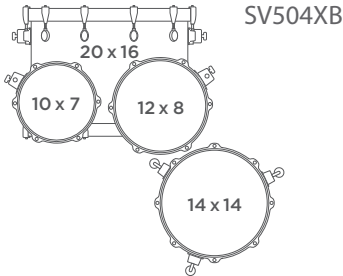
### 3pc Rock Shell Pack [1↑ - 1↓]

The 1 up and 1 down set-up is designed for groove. With its 12" and 16" tom sizes, this set-up is a great starting point for building a custom configured kit. Individual drums are available in each finish.



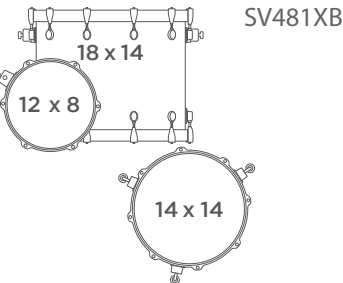
### 4pc Jazz Shell Pack [2↑ - 1↓]

This 2 up and 1 down shell pack with 20" bass drum finds the balance between versatility and practicality. It can be tuned in a wide range, whether up high for jazz and fusion or down deep for rock-n-roll.



### 3pc Jazz Shell Pack [1↑ - 1↓]

This 1 up and 1 down jazz set-up is a bop classic. With an 18" bass drum, fast rack tom, and standard depth floor tom, these drums can be pitched up without losing their bottom.





# NATURAL MAPLE BURL

When it comes to turning heads, this kit is a sure thing. The Natural Maple Burl highlights unique figuring under a high-gloss clear lacquer. You'll catch yourself lost in its detail. Don't forget... You're supposed to play them.



Featured Set-up: 5pc Studioease Shell Pack - [2↑ - 2↓]



# DEEP WATER MAPLE BURL

The deep blue burst over the maple burl veneer gives the sensation of looking into a watery abyss. The grain creates the illusion of currents passing before your eyes. It's up to you to explore its depths.



Featured Set-up: 4pc Rock Shell Pack – [2↑ - 1↓]



## CHERRY MIST MAPLE BURL

The tight curl of the maple burl ripples under the vibrant red transparent lacquer. Its class and sophistication are the bait that will lure you in. There's just something about curly redheads...



Featured Set-up: 3pc Rock Shell Pack - [1↑ - 1↓]





# SATIN BLACK MAPLE BURL

This matte finish is anything but flat. The figured burl veneer shows clearly through the transparent satin black stain, giving this finish amazing depth and dimension. This kit won't be lost in the shadows.



Featured Set-up: 4pc Jazz Shell Pack – [2↑ - 1↓]





RASHID WILLIAMS  
JOHN LEGEND

— TOUR EDITION —

THE NEW SATURN V TOUR EDITION FEATURES THE UNMISTAKABLE AND MODERN SOUND OF THE SATURN MAPLE/WALNUT HYBRID SHELLS, BUT COMBINES CLASSIC LOOKS AND SIZES. ALL SATURN V TOUR EDITION DRUMS ARE FITTED WITH CHROME HARDWARE AND FEATURE THE SONICLEAR™ BEARING EDGE, WHICH PROMOTES EASIER TUNING AND PRODUCES A STRONGER AND DEEPER SOUND.





# BLACK STRATA PEARL

A nod to the past but firmly in the present. The oyster pattern with tints of black, blue and soft grey lend the Black Strata Pearl a classic look with a modern intensity.

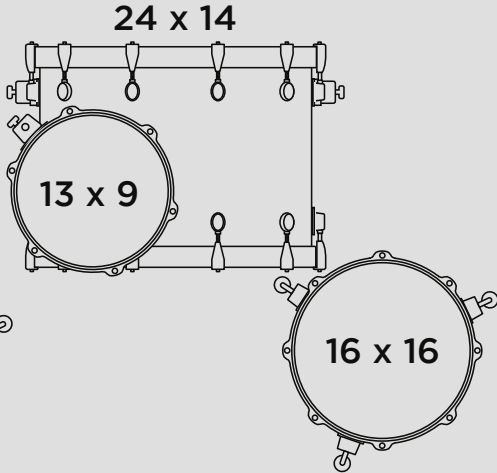
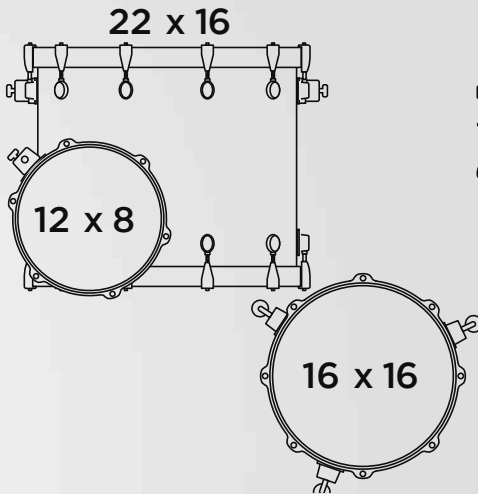
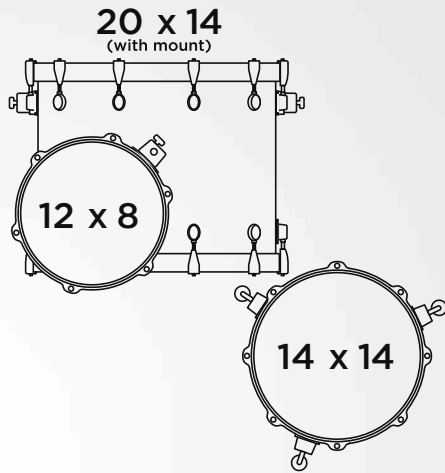


Featured Set-up: 24" x 14" Bass Drum, 13" x 9" Rack Tom, 16" x 16" Floor Tom, 14" x 6" Snare Drum (sold separately)



# CORE PACK CONFIGURATIONS

The Saturn V Tour Edition core pack configurations are available in 3 common and popular set-ups and are ideal for the gigging drummer needing a one up and one down set-up, but can be customised by adding drums from the list of components below.



# ADD-ON COMPONENTS

BASS DRUMS	RACK TOMS	FLOOR TOMS	SNARE DRUM
20" x 14" (with mount)	10" x 7"	14" x 14"	14" x 6"
22" x 16"	12" x 8"	16" x 16"	
24" x 14"	13" x 9"	18" x 16"	





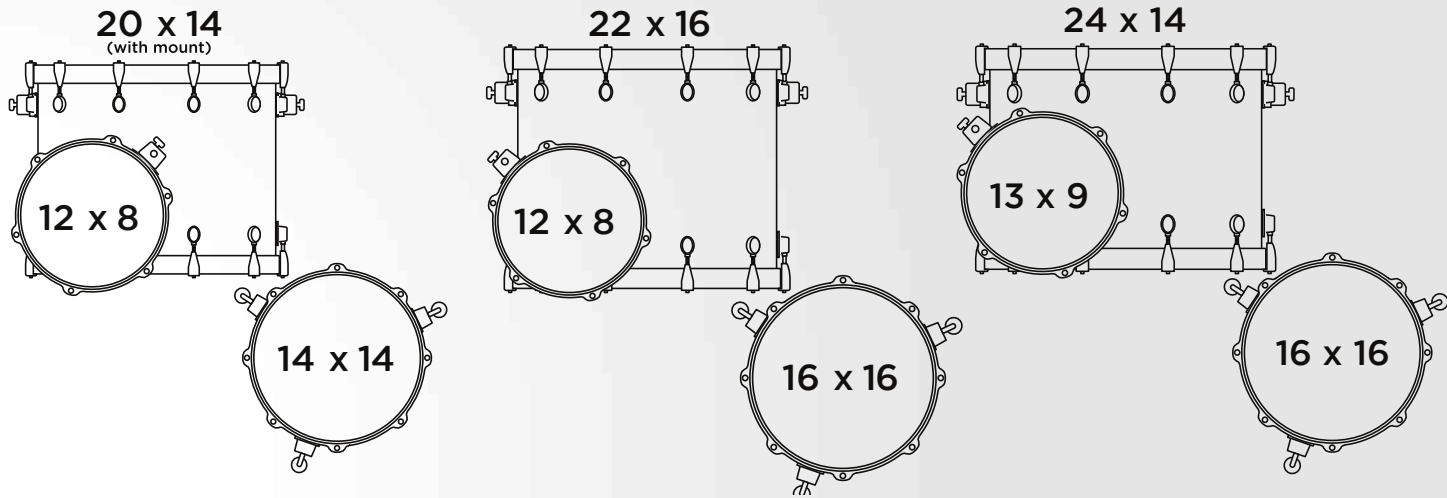
# VINTAGE SPARKLE

An old soul reborn. The timeless gold glimmer of the Vintage Sparkle hints at another era like hearing a classic riff in modern music.



# CORE PACK CONFIGURATIONS

The Saturn V Tour Edition core pack configurations are available in 3 common and popular set-ups and are ideal for the gigging drummer needing a one up and one down set-up, but can be customised by adding drums from the list of components below.



# ADD-ON COMPONENTS

BASS DRUMS	RACK TOMS	FLOOR TOMS	SNARE DRUM
20" x 14" (with mount)	10" x 7"	14" x 14"	14" x 6"
22" x 16"	12" x 8"	16" x 16"	
24" x 14"	13" x 9"	18" x 16"	



Featured Set-up: 20" x 14" Bass Drum (with mount), 12" x 8" Rack Tom, 14" x 14" Floor Tom, 14" x 6" Snare Drum (sold separately)



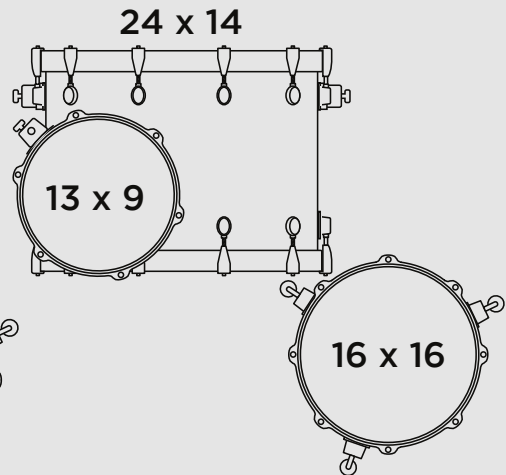
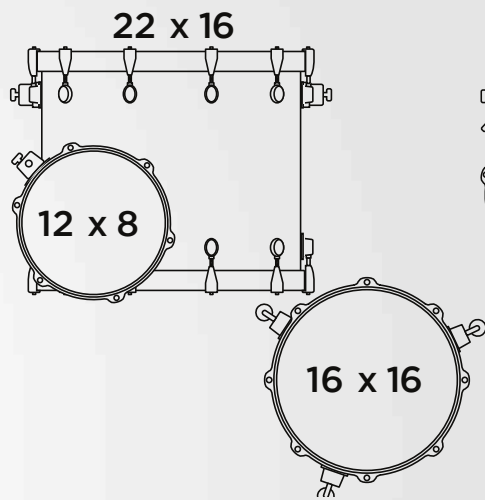
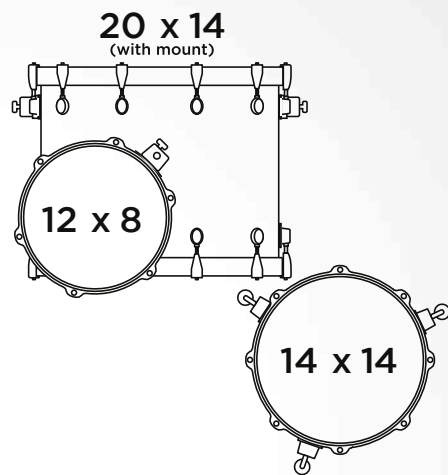
# WHITE MARINE

Classically cool with subtle sophistication. The ripple of the White Marine will dance under the stage lights yet this kit could sit as the centerpiece in any studio.



# CORE PACK CONFIGURATIONS

The Saturn V Tour Edition core pack configurations are available in 3 common and popular set-ups and are ideal for the gigging drummer needing a one up and one down set-up, but can be customised by adding drums from the list of components below.



# ADD-ON COMPONENTS

BASS DRUMS	RACK TOMS	FLOOR TOMS	SNARE DRUM
20" x 14" (with mount)	10" x 7"	14" x 14"	14" x 6"
22" x 16"	12" x 8"	16" x 16"	
24" x 14"	13" x 9"	18" x 16"	



Featured Set-up: 22" x 16" Bass Drum, 12" x 8" Rack Tom, 16" x 16" Floor Tom, 14" x 6" Snare Drum (sold separately)



# BLACK PEARL

Eerily familiar but unmistakably new. The subtle contrast between the dark and light contours of the Black Pearl will draw the eye in for a closer look.

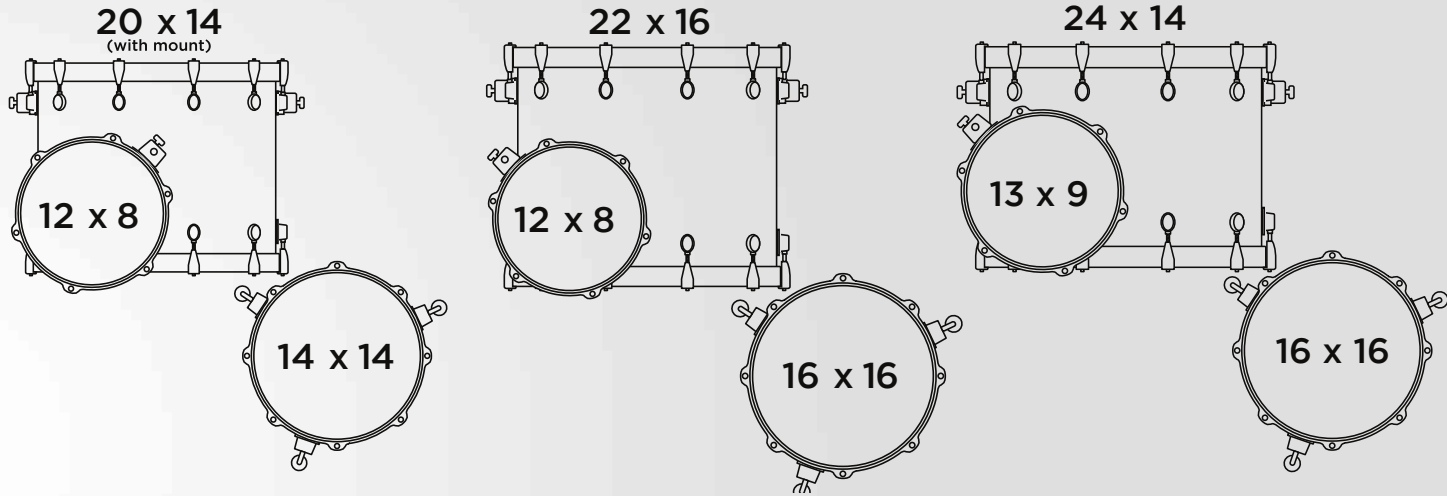


Featured Set-up: 24" x 14" Bass Drum, 13" x 9" Rack Tom, 19" x 19" Floor Tom, 14" x 6" Snare Drum (sold separately)



# CORE PACK CONFIGURATIONS

The Saturn V Tour Edition core pack configurations are available in 3 common and popular set-ups and are ideal for the gigging drummer needing a one up and one down set-up, but can be customised by adding drums from the list of components below.



# ADD-ON COMPONENTS

BASS DRUMS	RACK TOMS	FLOOR TOMS	SNARE DRUM
20" x 14" (with mount)	10" x 7"	14" x 14"	14" x 6"
22" x 16"	12" x 8"	16" x 16"	
24" x 14"	13" x 9"	18" x 16"	



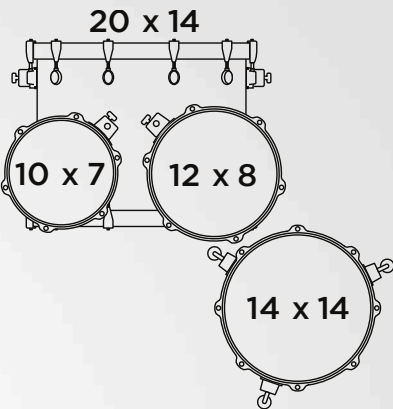


# PRE-SET CONFIGURATIONS

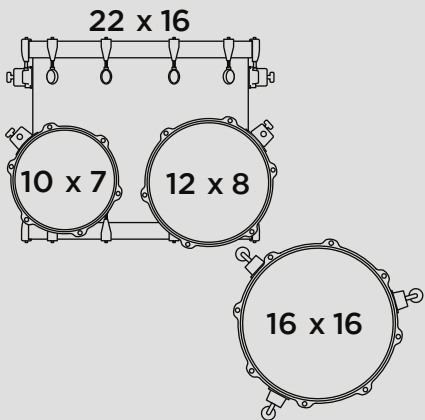
Saturn V Tour Edition also offers a variety of pre-set configurations designed to fit diverse musical applications. Whether your preference is 2-up and 1-down OR 1-up and 2-down, the Tour Edition 4pc configurations will have what you need.



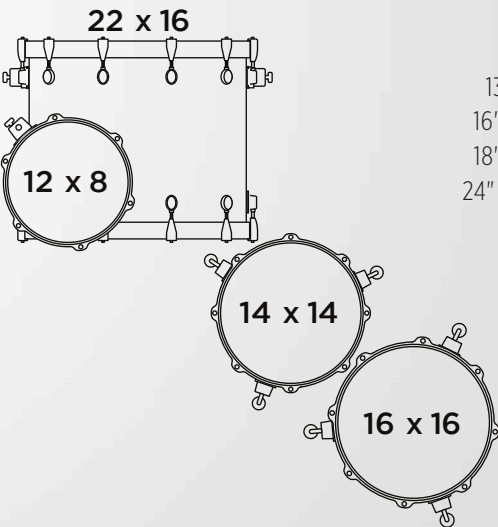
**SVTE504X**  
10" x 7" Rack Tom  
12" x 8" Rack Tom  
14" x 14" Floor Tom  
20" x 14" Bass Drum  
(with mount)



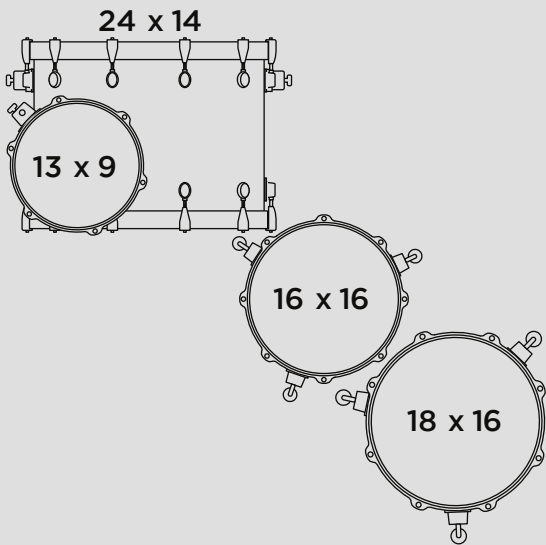
**SVTE529X**  
10" x 7" Rack Tom  
12" x 8" Rack Tom  
16" x 16" Floor Tom  
22" x 16" Bass Drum



**SVTE528X**  
12" x 8" Rack Tom  
14" x 14" Floor Tom  
16" x 16" Floor Tom  
22" x 16" Bass Drum



**SVTE548X**  
13" x 9" Rack Tom  
16" x 16" Floor Tom  
18" x 16" Floor Tom  
24" x 14" Bass Drum



Featured Set-up: 22" x 16" Bass Drum, 12" x 8" Rack Tom, 14" x 14" & 16" x 16" Floor Toms, 14" x 6" Snare Drum (sold separately)





Chris Adler  
Lamb Of God



Jordan Burns  
Strung Out



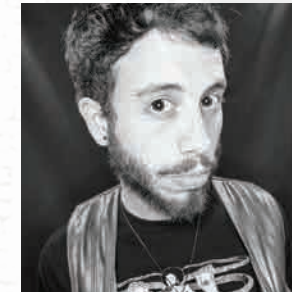
Will Calhoun  
Living Colour



Nick Crescenzo  
The Dear Hunter



Mitch Marine  
Dwight Yokum



Aaron McVeigh  
Foxy Shazam



Russ Miller  
American Idol



Carlos Palmeri  
Pitbull



Josh Devine  
One Direction



Ced Mitchell  
Nick Jonas



Dom Famularo  
Global Drumming Ambassador



Steve Fidyk  
Steve Fidyk Parlour Project



Lee Pearson Jr  
Chris Botti



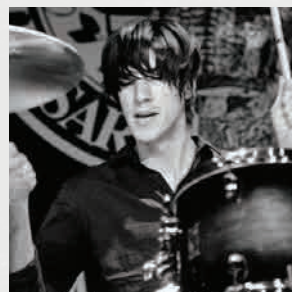
Ralph Peterson  
Berklee College Of Music



Aquiles Priester  
Tony MacAlpine & Primal Fear



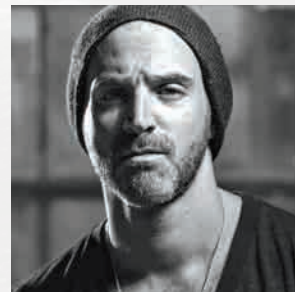
Johnny Rabb  
Collective Soul



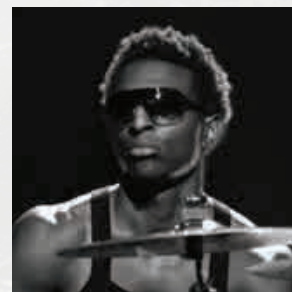
David Field  
Prima Donna



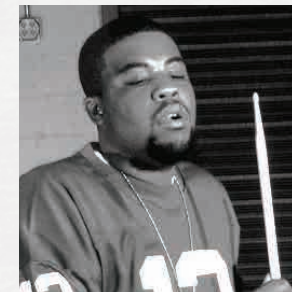
Sean Fuller  
Florida Georgia Line



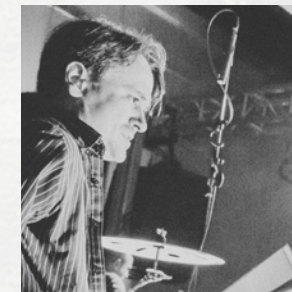
Matt Halpern  
Periphery



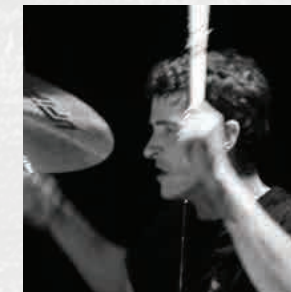
Jason Holt  
Allen Stone



Darrell Robinson  
Pharrell



Damien Schmitt  
Jean Luc Ponty



Burke Thomas  
Duff McKagan



Rashid Williams  
John Legend



[WWW.MAPEXDRUMS.COM/SATURN-V](http://WWW.MAPEXDRUMS.COM/SATURN-V)

